

COMMUNITY BUILDING

METVERSE & WALLET
Projects

walter.vanherle@bdo.be
stijn.rasschaet@bdo.be

INNOVATION

INSIDE-IN

INSIDE-OUT

OUTSIDE-IN

OUTSIDE-OUT

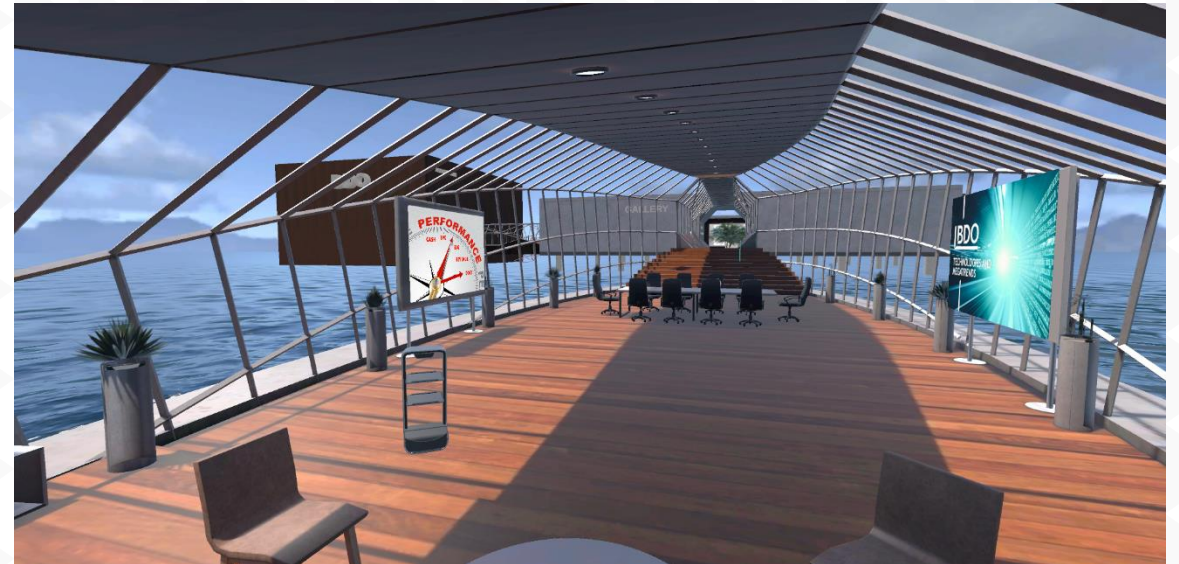
BDO

BDO METAVERSES (Show-Cases)

Version 1 – 2022/6



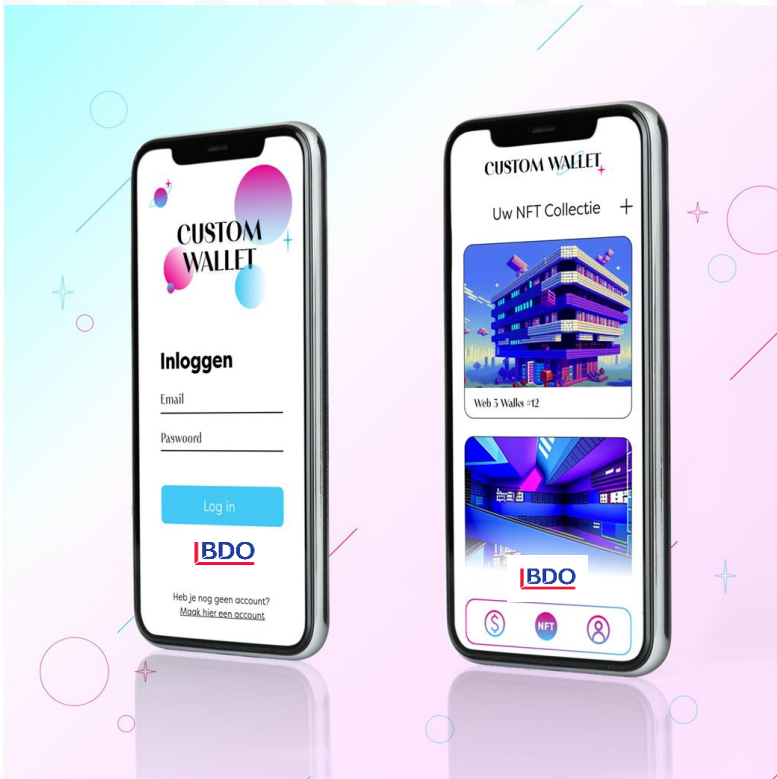
Version 2 – 2023/6



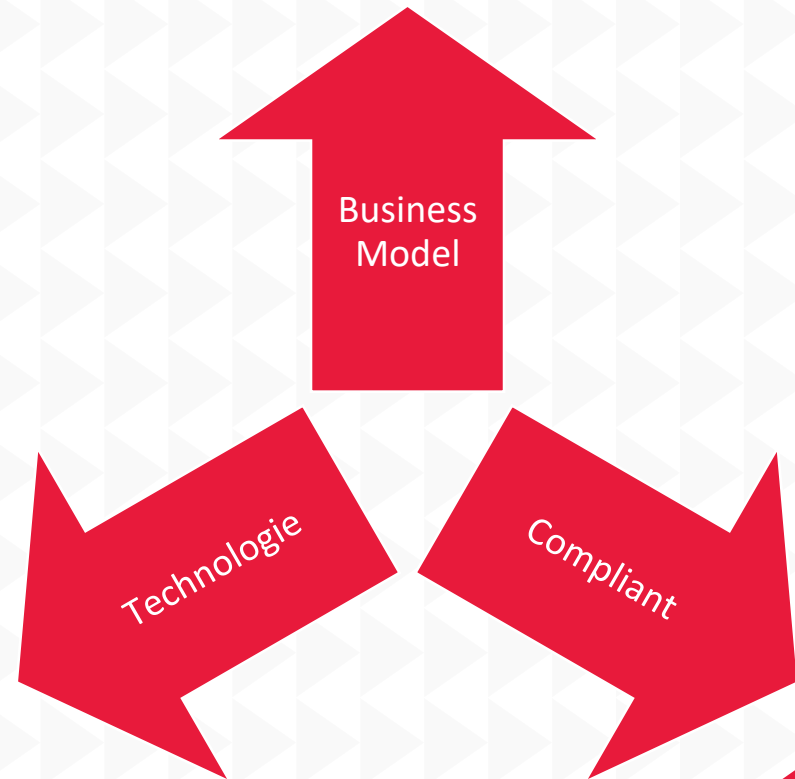
Project BDO Wallet

Voor bestaande en nieuwe medewerkers

Solution



Challenge



Project BDO Wallet

Voor bestaande en nieuwe medewerkers

- **Business Model (WHY)**– Tokenisation
 - Harmoniseren van bestaande beloningsinstrumenten (logan\$, Bongobon, Geschenkbonnen, ...)
 - Uitbreiding met bewijs van realisaties (certificaat van opleiding (Audit, Accounting, ...) , succesvol project zoals Stage, ...)

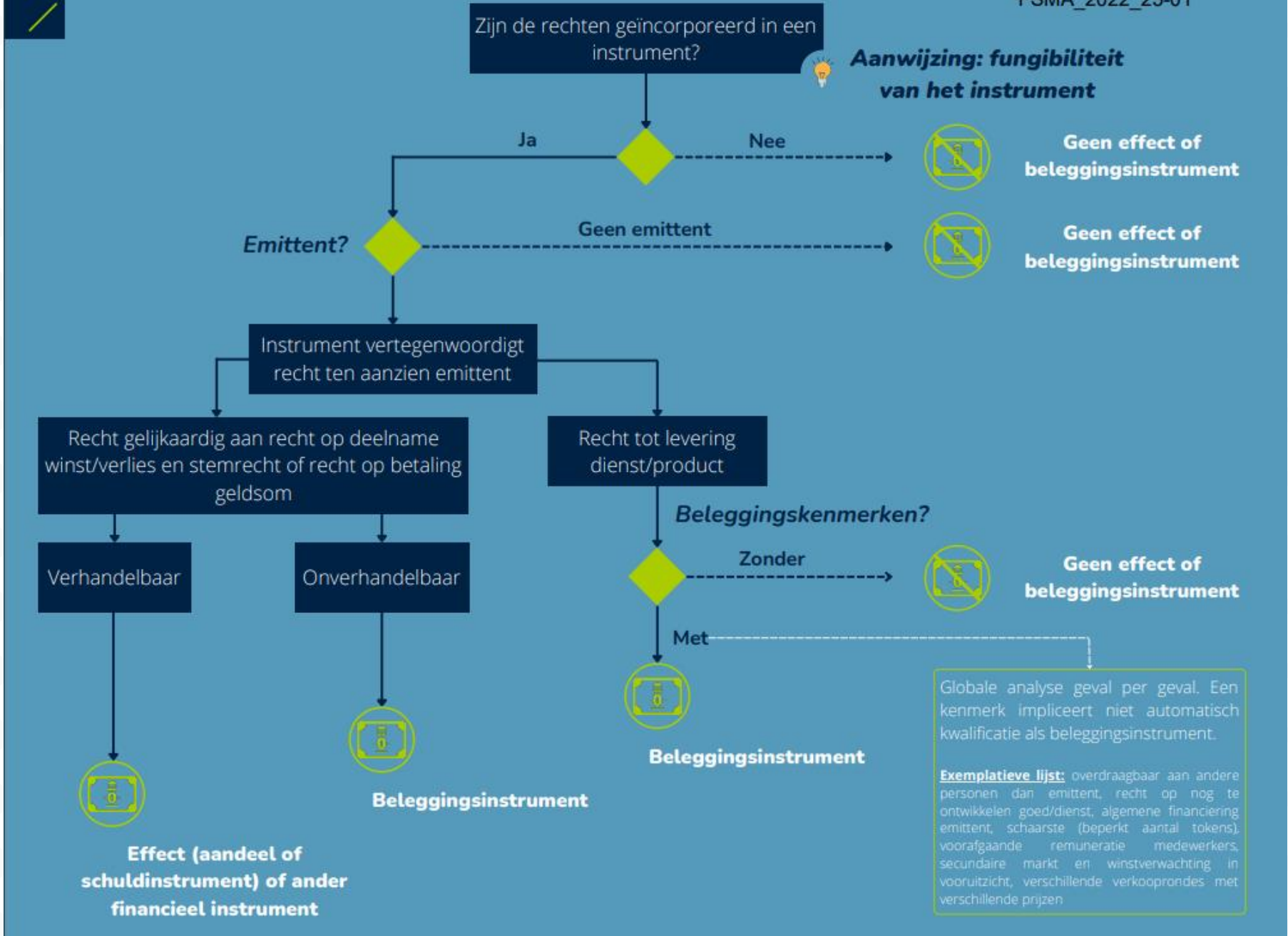
Dit voor bestaande en nieuwe medewerkers

Bij uitbreiding inzet in bedrijven als nieuw instrument voor community building/loyalty
- **Compliant (HOW)**– Wallet voldoet aan de wettelijke voorwaarden
 - FSMA
 - MiCa wetgeving
 - GDPR
 - ...
- **Technologie (WHAT-HOW)**
 - Hyperledger Fabric + blockchain
 - Utility and Security tokens, NFT ?
 - Opschaalbaar

ROADMAP - EXPLORATION ON THE SAFE POSSIBILITIES



Dall-E 3 : Make a display with 3 panels. Panel 1 carries the Name First Ambition. Panel 2 Text Tailored to manage Compliance and Risk. Panel 3 Final Proposition



GET TO KNOW BDO A BIT BETTER ...

BDO SERVICES (Extract)

InnovationLab

- Workshop(s) to explore needs/opportunities and possible solutions (functional, technical, economical or business case with optional check if grants & incentives would be applicable. If applicable BDO will help to file the request)

Training

- Awareness Training (online) and best practice use course(s)
- Classical Training (BDO Academy, On-Site, On-Line)

Implementation and Automation Services

- Set-up of your private environment (Azure+) and assist with the development of the use cases
- Development of Private Environments (Use of Generative AI)
- Data and Application Integration Services (Use of Robotic Process Automation and related)

BDO Compliance Services

- Full accountancy crypto
- Full tax services
- Legal (IP, DRM, GDPR, ...)
- Compliance & Risk

[linkedin.com/in/waltervanherle](https://www.linkedin.com/in/waltervanherle)

walter.vanherle@bdo.be



<https://www.linkedin.com/in/stijnrasschaert>

stijn.rasschaert@bdo.be

'BDO', 'we', 'us', and 'our' refer to one or more of BDO International Limited, its network of independent member firms ('the BDO network'), and their related entities.

The BDO network is an international network of independent public accounting, tax and advisory firms which are members of BDO International Limited and perform professional services under the name and style of BDO (hereafter: 'BDO Member Firms'). BDO International Limited is a UK company limited by guarantee. It is the governing entity of the BDO network.

Service provision within the BDO network is coordinated by Brussels Worldwide Services BV, a limited liability company incorporated in Belgium. Each of BDO International Limited, Brussels Worldwide Services BV and the BDO Member Firms is a separate legal entity and has no liability for another entity's acts or omissions. Nothing in the arrangements or rules of the BDO network shall constitute or imply an agency relationship or a partnership between BDO International Limited, Brussels Worldwide Services BV and/or the BDO Member Firms. Neither BDO International Limited nor any other central entities of the BDO network provide services to clients.

BDO is the brand name for the BDO network and for each of the BDO Member Firms.

© Brussels Worldwide Services

